



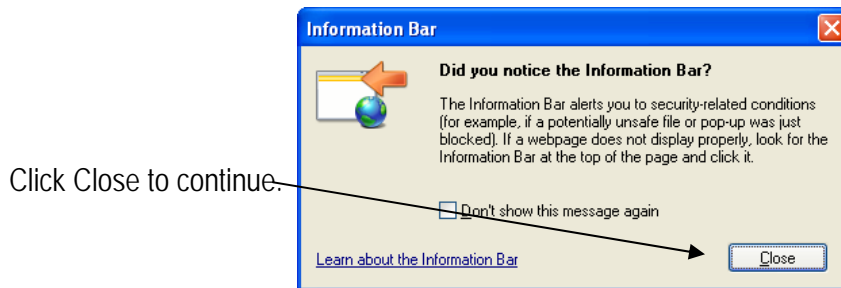
The Sidewinder PTZ camera provides a high quality analog picture and requires data for PTZ control. A standard field installation will include a WTI interface panel that provides for easy separation and distribution of video, data, and power. These components are installed within this internet demonstration of the Sidewinder. The Sidewinder is located on a custom parapet mount on the corner of WTI corporate office building complex in Ventura, California.

The notes herein are a description of gaining internet access to the Sidewinder using the WTI Video Server; an IP based encoding/decoding device.

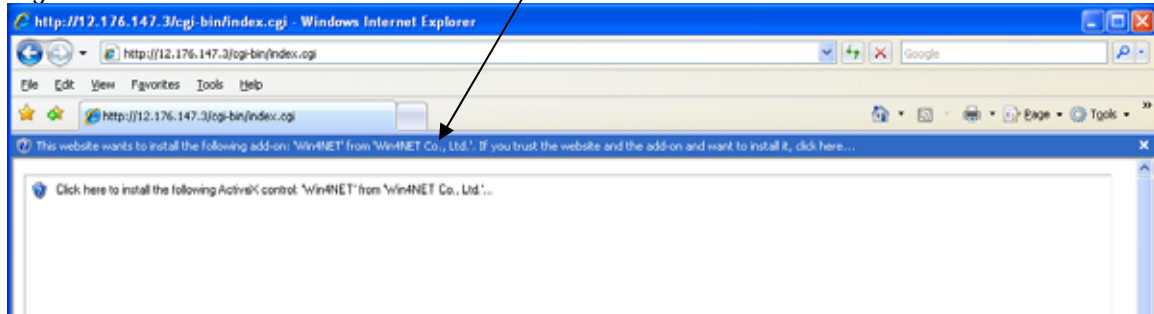
Internet Address:

<http://12.176.147.3/>

It may take a moment for this screen to come up on a computer that has never been attached to this device. You will get the following message on the first attempt to connect.



Your screen will appear blank. Look at the bar below the Tab area. Right-click and select Install ActiveX control.



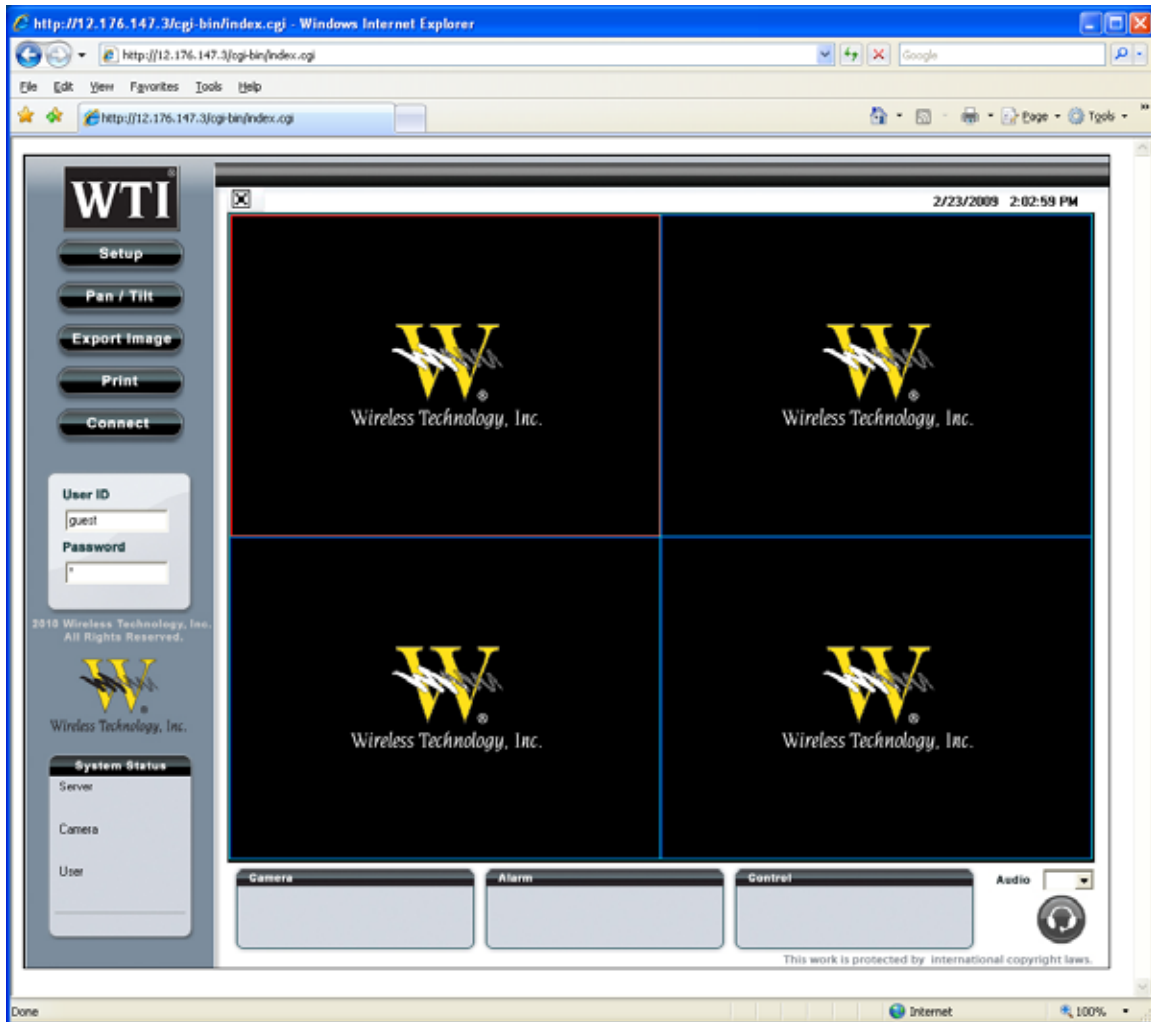
A security warning will appear (depending on the settings within your computer).





The menu area on the left may show up before video is presented in the window.
Look at the bottom of the screen to see the files being installed. Once completed, you will see "Done" indicated on the lower left of the window.

What you just experienced is a one time process for this computer.



The controls have been loaded and you are now ready to login...

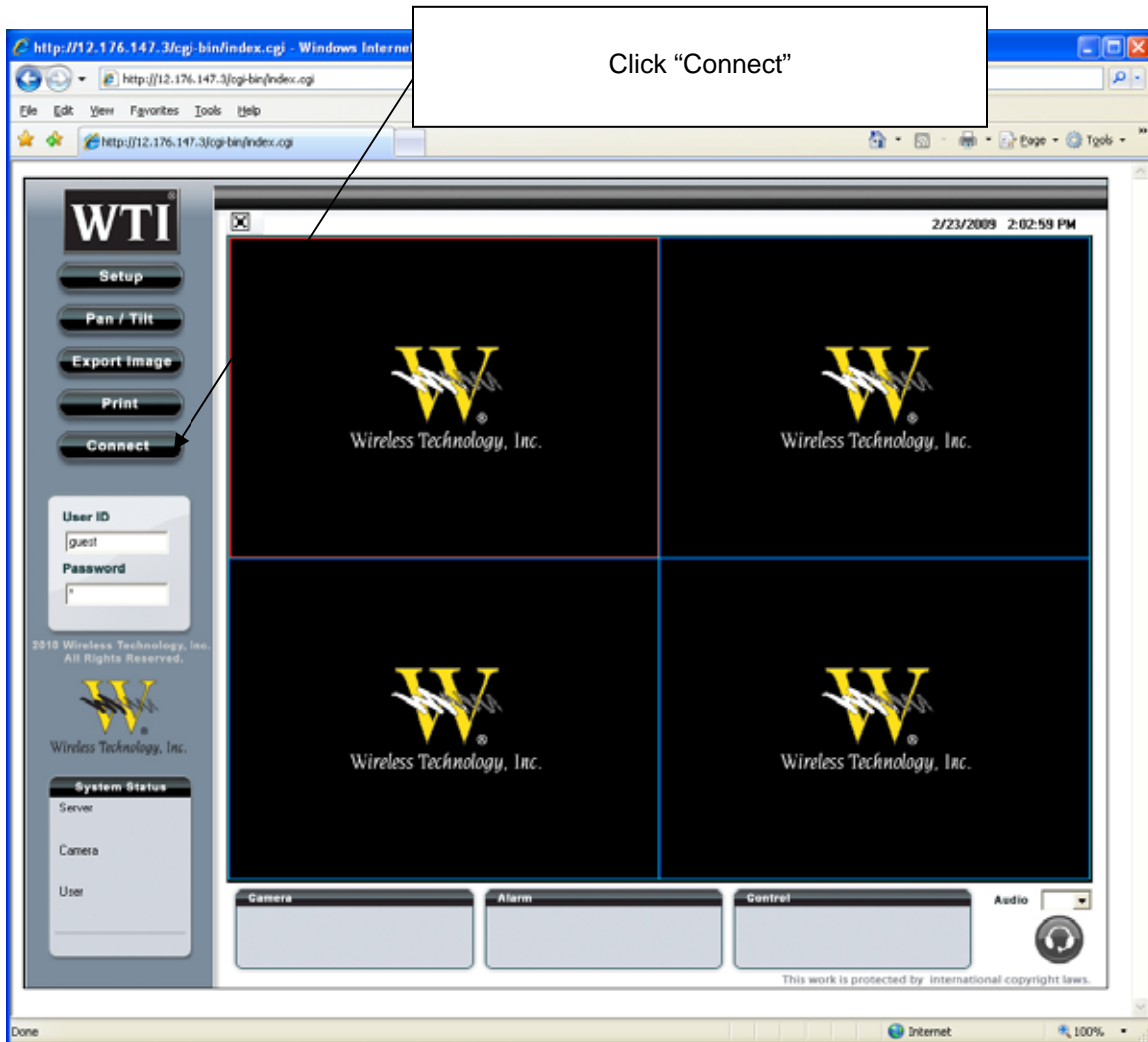


Internet Address:

<http://12.176.147.3/>

Username: guest Password: <blank>

Then click "Connect"





Factors that may limit performance:

- 1) Internet speed
- 2) Video chipset within the video card on the computer.
 - a. Although a variety of video cards are fine, those found to have the ATI chipset have proven consistently successful when presenting video within this demonstration.
 - b. If the video presents itself as a blue block, the video card will not run this high-end device – or – there may be a firewall block of the live video port.
- 3) Internal Firewall: (video server port usage)
 - a. Command – Port 7000
 - b. Live – Port 7001
 - c. 2way Audio – Port 7002
 - d. Download – Port 7003
 - e. Backup – Port 7004
 - f. Web Viewer – Port 80





General Web Interface Information:

- 1) Video Server (aka: encoder) Functions – on the top, left are five buttons that offer all of the setup and control functions for this web enabled encoder.
- 2) Audio (found on lower right) – not available in this demonstration.
- 3) Tours – Only tour #1 has been set
- 4) Presets – Eight presets have been set. Preset notes below.
 - a. Preset #1 – Hilltop approx. 6 miles away.
 - b. Preset #2 – same as #1 with no zoom
 - c. Preset # 6 – Flag at ¼ mile away
 - d. Preset #7 – same as #6 with no zoom
 - e. Preset #8 – Seagull roosting spot (just for kicks)





PTZ Controls:

Click the Pan / Tilt button to get the PTZ Control panel as shown.



The PTZ control panel can be moved anywhere by handling the gray bar across the top of the panel.



** Please place the Sidewinder back on tour before you exit **



PTZ Controls - Basic



- 1) Eight Pan Control buttons – move Sidewinder in both axes.
- 2) Zoom
- 3) Focus – this will take the Sidewinder out of auto-focus mode. Click on a preset to regain auto-focus.
- 4) Iris – this will take the Sidewinder out of auto-iris mode. Click on a preset to regain auto-iris.
- 5) Aux1 and Aux2 are not connected in this demonstration.
- 6) Tour – this will launch tour #1.
- 7) PTZ Presets – only the first eight are currently programmed for use within tour #1.
- 8) Advanced Menu – this is covered on next page.



PTZ Controls - Advanced

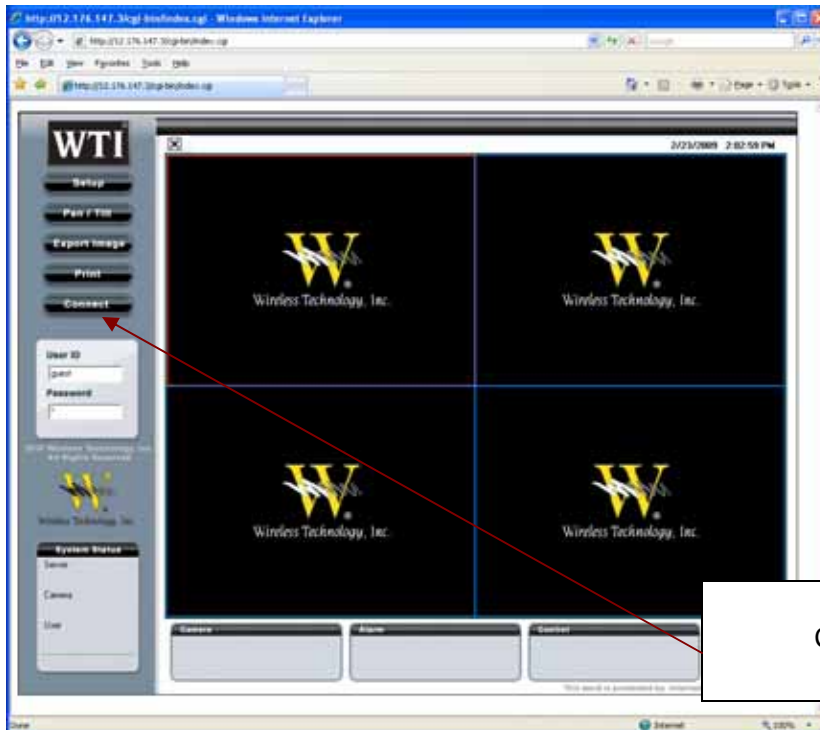


- 1) Open the Advanced Menu.
 - a. These are used for programming the presets.
 - b. Please feel free to manipulate Preset 9 and 10.
 - c. Leave Presets 1 through 8 as they are for Tour purposes. (Thanks)

- 9) Programming Preset 9 or 10
 - a. Position Sidewinder for the desired view.
 - b. Click 9 or 10
 - c. Click Set



These instructions were created on a rainy day. You should get better video than shown here as I understand that it never rains in Southern California.



Click "Connect" to Disconnect